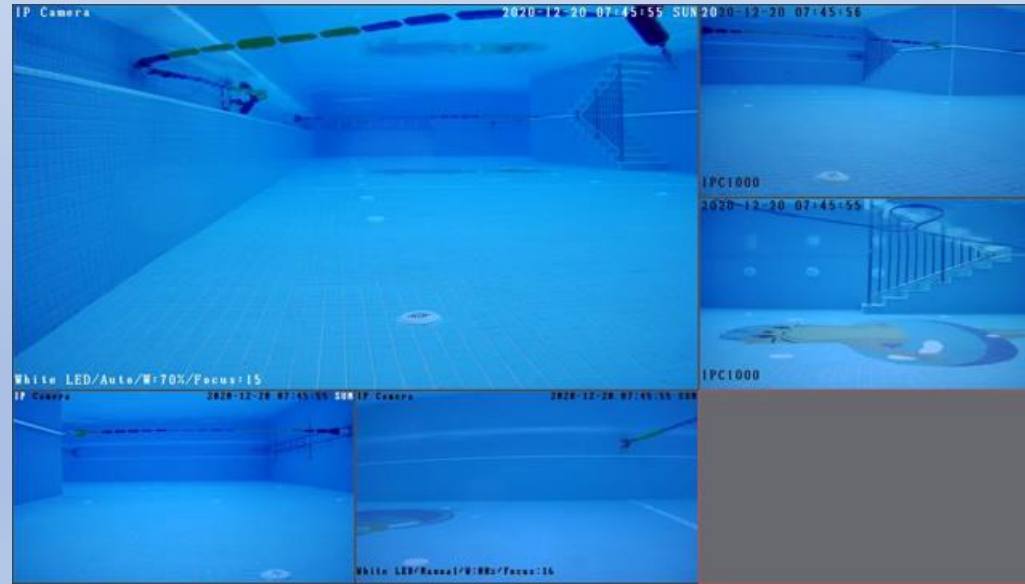
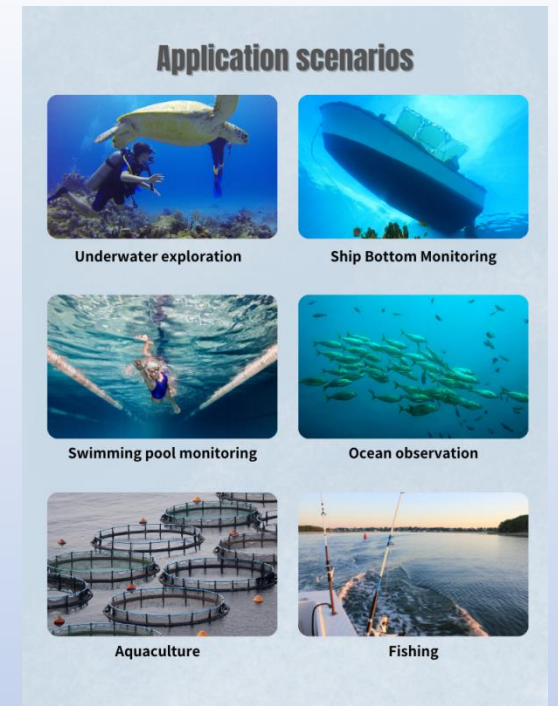


Marine Network Camera

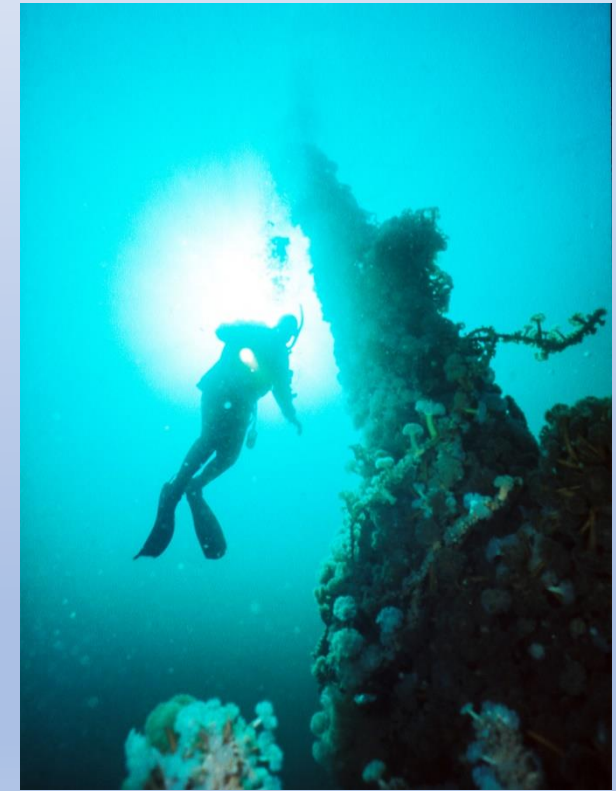
Application:

- Fish Farm Industry
- Yacht/Vessel/boat project
- Subsea project
- All under seawater monitoring

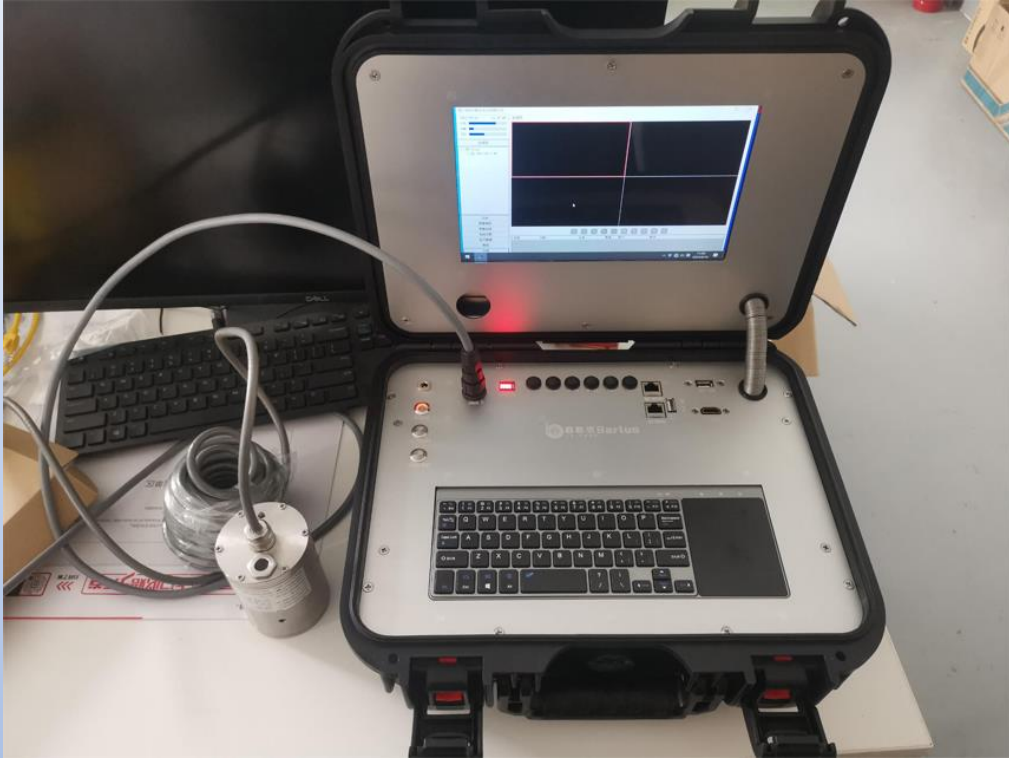


Rett verktøy til jobben

T.A.Solheim AS
Merdslippen AS
Norce AS
5 diffret salaomon rivers in Nord Norway
Sintef AS
g. Øye AS



D10000



On August.2019, it serviced for a German Naval Project.

On June,2023.it serviced for a Bangladesh army project.

- Suitcase with built-in windows system
- Split screens
- 4cameras can work together the same time



12m fiber telescopic pole is available

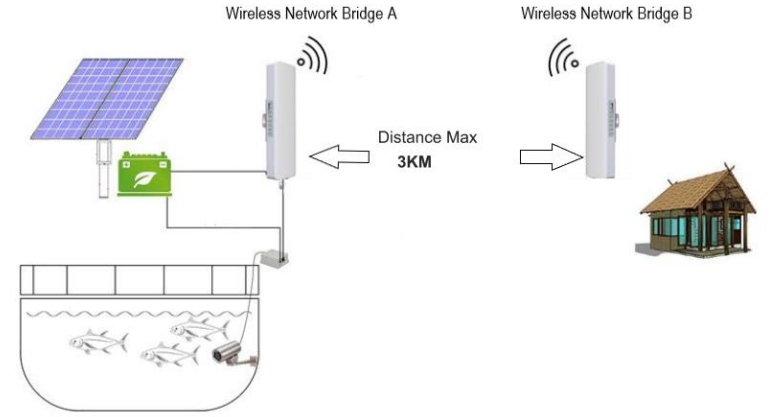


D1010-SS series



Φ70mm*86mm(L)
 Φ70mm*100mm(L)
 Φ70mm*140mm(L)

Out door without singal



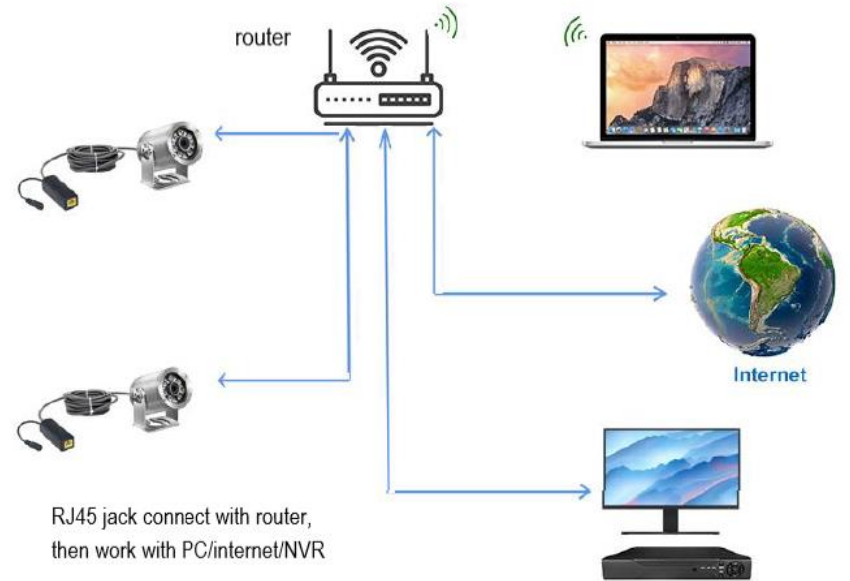
In door



RJ45 jack connect directly with p



RJ45jack connect with NVR,
 then work with pc



192. 168. 1. 88
 255. 255. 255. 0
 192. 168. 1. 1

192. 168. 1. 200
 255. 255. 255. 0
 :192. 168. 1. 1

192. 168. 1. 88
 255. 255. 255. 0
 192. 168. 1. 1

192. 168. 1. 200
 255. 255. 255. 0
 192. 168. 1. 1

D1010-SS series



Φ70mm*86mm(L)
Φ70mm*100mm(L)
Φ70mm*140mm(L)



- Water depth: 50M. Customized water depth available
- Work for salt water
- 3.6MM. 2.8MM,2.0MM Fix lens, 2.8mm-12mm /3.6mm-11mm electrical zoom lens.
- Focus length customized. 0-2M
- Built-in led lights and infrared lights. Dimness



D10011



Φ46mm*80mm

A mini camera service for diving and yacht

- 2.8mm lens
- Water depth: 50M
- Service for salt water
- Built-in led lights and infrared lights



DZ10010-SS-5ESU



- $\Phi 70\text{mm} * 190\text{mm}$
- 5 lens in one camera housing. 4 pcs in side, 1 pc in down
- Each lens with built-in lights

- 2.8mm lens.(H.FOV: 95°)
- Water depth: 50M
- Service for salt water



DZ10010-SS-3Eye



One lens with one or two extra underwater lights

- 3.6mm-11mm lens.(H.FOV: 80°-35°)
- Water depth: 50M
- Service for salt water

- $\Phi 70\text{mm} * 140\text{mm}$
- 1 lens and two extra under lights
- Each light with built-in 6 led lights and 4 infrared lights,32W and 4000Lumens



Your Market

Brands

Our marine network camera advantage

- We have a strong continuously development ability. Established relationship with top technology research center in China and Europe.
- Building global agents resell system
- Build Barlus brand
- All the software developed by ourselves
- On water depth/resolution/AI/ and so on, have a technology breakthrough
- As our camera with network work well, with wide application and on the trend of market.
- In future, our products will become better, even better.

